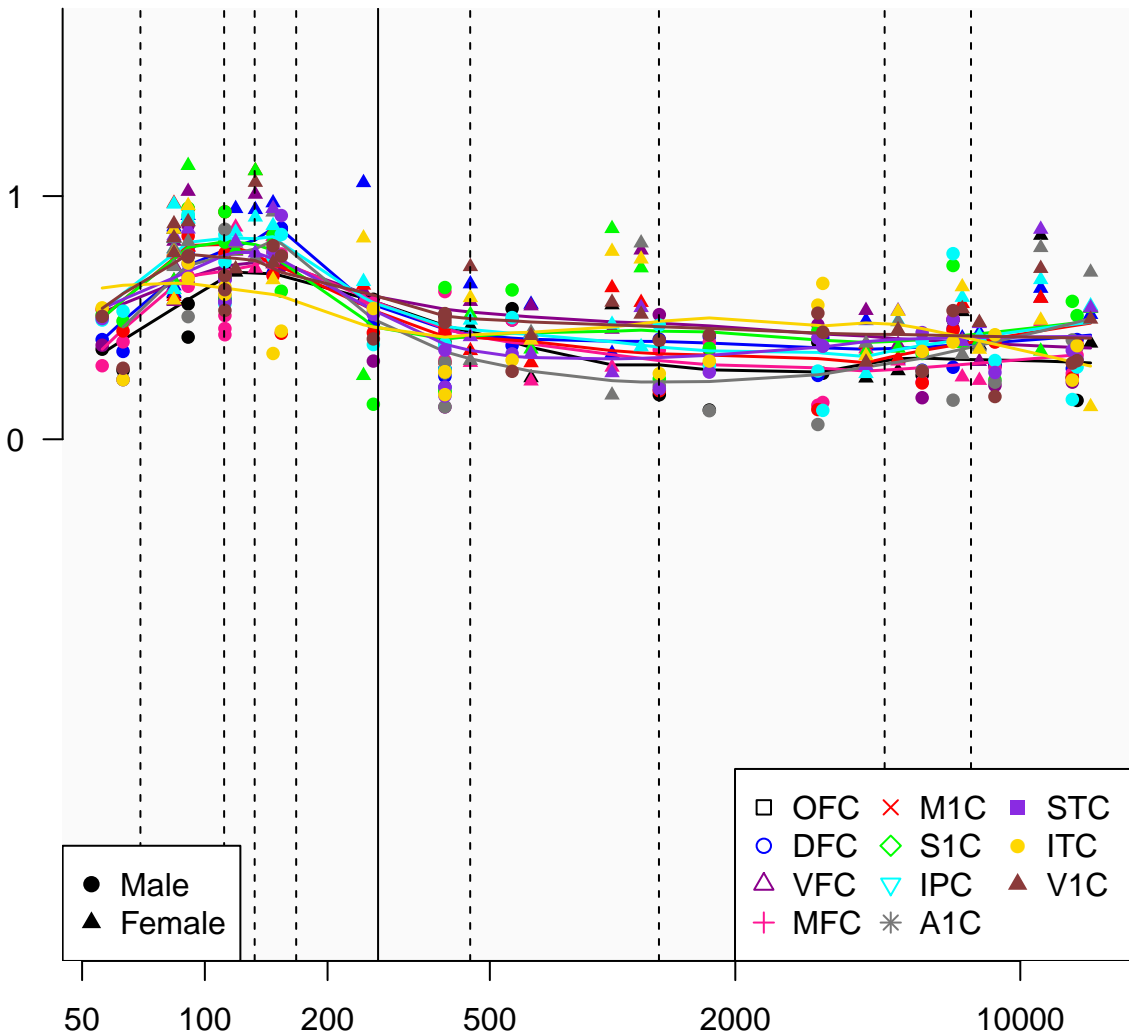


# CTC-360G5.9\_ENSG00000269486

Window:

1 2 3 4 5 6 7 8 9

Normalized Log2 RPKM+1



● Male  
▲ Female

□ OFC    × M1C    ■ STC  
○ DFC    ◇ S1C    ● ITC  
△ VFC    ▽ IPC    ▲ V1C  
+ MFC    \* A1C