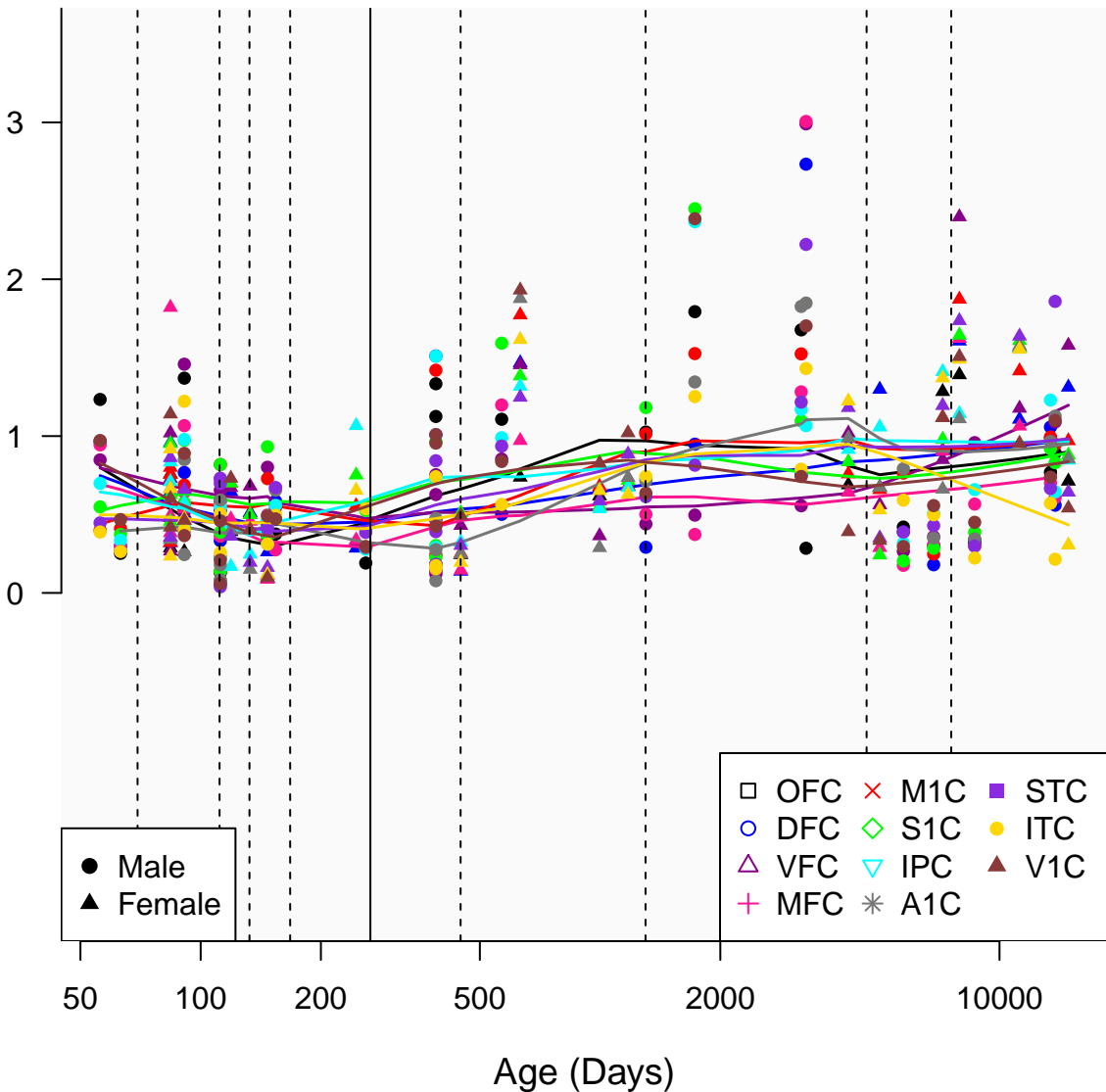


# MIR520F\_ENSG00000207555

Window:

1 2 3 4 5 6 7 8 9

Normalized Log<sub>2</sub> RPKM+1



● Male  
▲ Female

□ OFC	× M1C	■ STC
○ DFC	◇ S1C	● ITC
△ VFC	▽ IPC	▲ V1C
+ MFC	* A1C	