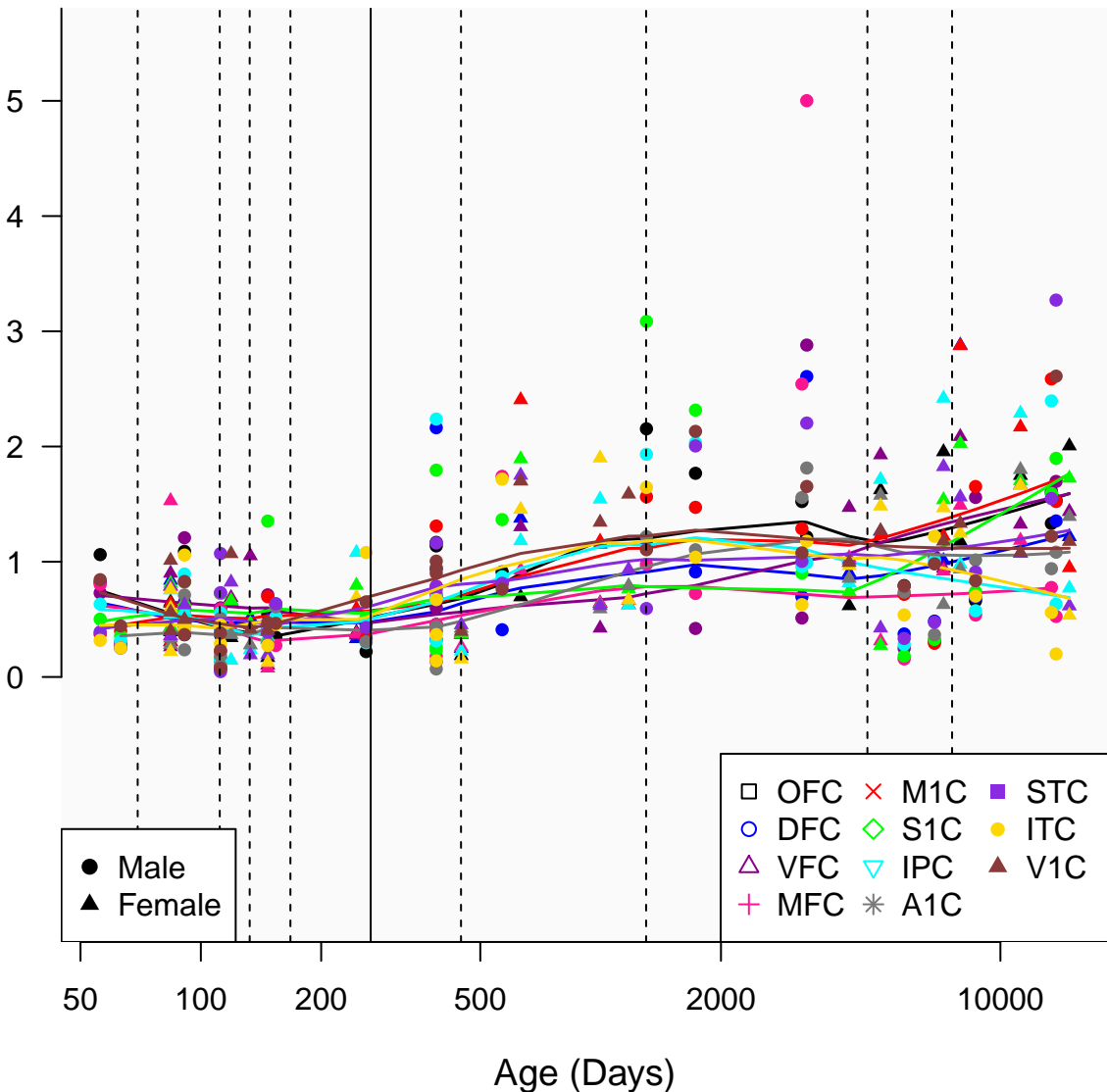


RNU6-833P_ENSG00000200356

Window:

1 2 3 4 5 6 7 8 9

Normalized Log₂ RPKM+1



● Male
▲ Female

□ OFC	× M1C	■ STC
○ DFC	◇ S1C	● ITC
△ VFC	▽ IPC	▲ V1C
+ MFC	* A1C	