

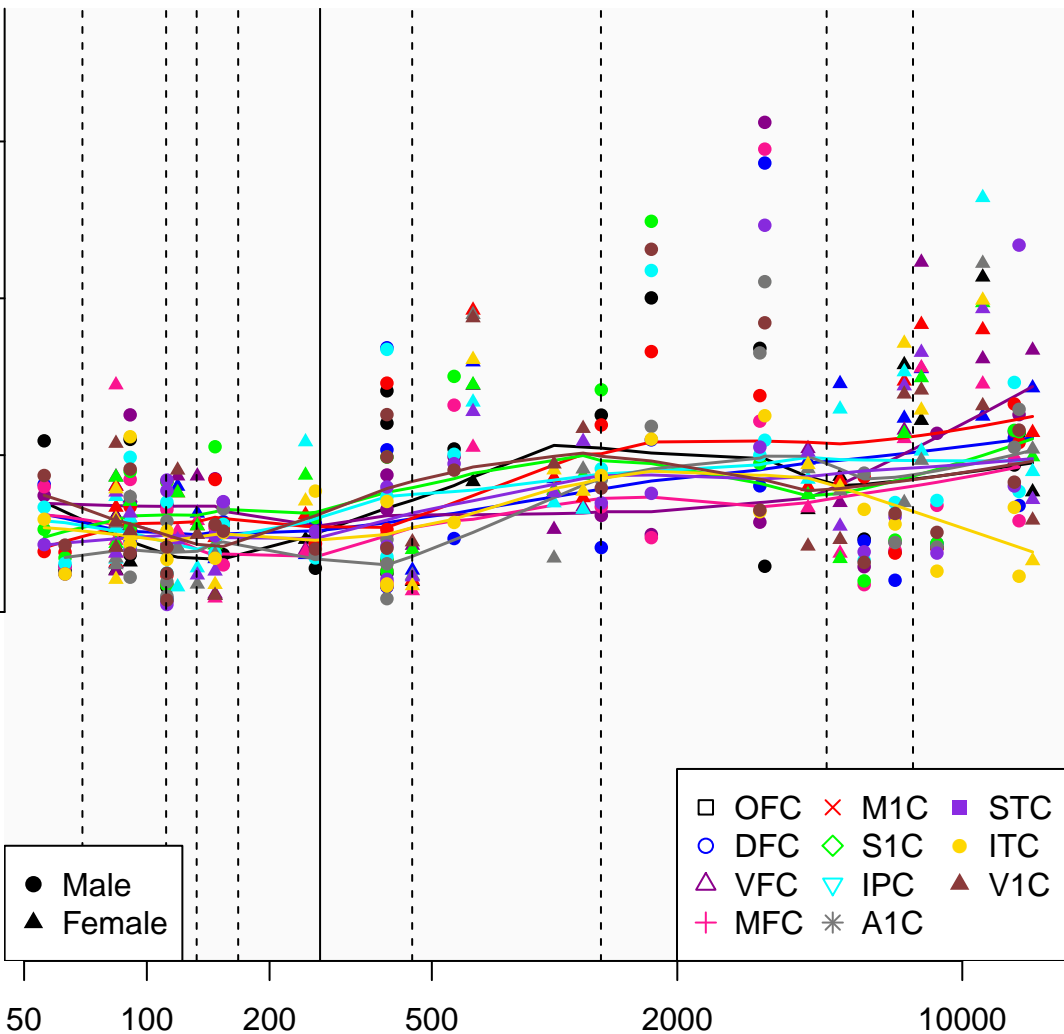
RNU6ATAC14P_ENSG00000252027

Window:

1 2 3 4 5 6 7 8 9

Normalized Log2 RPKM+1

3
2
1
0



● Male
▲ Female

□ OFC × M1C ■ STC
○ DFC ◇ S1C ● ITC
△ VFC ▽ IPC ▲ V1C
+ MFC * A1C